

Dignity is a necessity,
so is affordability...

Avenidas

FUNERAL CHAPEL

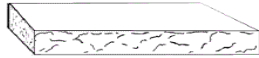
"Small enough to show we care"

Memorial Marker Program

522 E. Western Ave
Avondale AZ 85323
623 925-1525 FAX 623 882-3293

Avenidas Funeral Chapel

Memorial Markers
Phone 623-925-1525 FAX 623- 882-3293



3" Flat Memorial Markers

Polished Top, Rock Textured on Sides

"THIS WIDTH NOT ALLOWED BY MOST PUBLIC CEMETERIES"

* Indicates "Premium Colors" I = Infant, S = Single, C = Companion

3 inch	Millstone Gray Morning Rose	St. Cloud Gray	Rushmore Mahogany	Flash Black	*Mountain Red	*Tropical Green	*Royal Black	*Blue Pearl
24" x 12" I, S	\$355	\$3865	\$405	\$445	\$465	\$4755	\$595	\$625
30" x 12" S, C	\$410	\$440	\$465	\$500	\$535	\$545	\$670	\$730
36" x 12" C	\$460	\$500	\$510	\$570	\$610	\$640	\$725	\$835
48" x 12" C	\$560	\$610	\$645	\$745	\$795	\$825	\$955	\$1,105
28" x 16" S, C	\$475	\$545	\$580	\$615	\$655	\$645	\$735	\$855



4" Flat Memorial Markers

Polished Top, Rock Textured on Sides

4 inch	Millstone Gray Morning Rose	St. Cloud Gray	Rushmore Mahogany	Flash Black	*Mountain Red	*Tropical Green	*Royal Black	*Blue Pearl
18" x 9" I	\$260	\$265	\$280	\$290	\$320	\$330	\$380	\$410
24" x 12" I, S	\$365	\$400	\$415	\$460	\$480	\$490	\$605	\$650
24" x 14" S	\$375	\$415	\$425	\$470	\$495	\$515	\$615	\$670
28" x 16" S, C	\$480	\$520	\$540	\$590	\$630	\$710	\$745	\$855
30" x 12" S, C	\$425	\$455	\$480	\$520	\$555	\$565	\$685	\$750
36" x 12" C	\$480	\$520	\$540	\$590	\$630	\$710	\$745	\$855
48" x 12" C	\$580	\$630	\$645	\$755	\$820	\$860	\$975	\$1,125



Beveled Memorial Markers

Polished Top, Rock Textured on Sides

6" to 4" Bevel	Millstone Gray Morning Rose	St. Cloud Gray	Rushmore Mahogany	Flash Black	*Mountain Red	*Tropical Green	*Royal Black	*Blue Pearl
18" x 9" I	\$325	\$355	\$360	\$385	\$405	\$460	\$525	\$605
24" x 12" I, S	\$420	\$450	\$460	\$470	\$585	\$600	\$710	\$780
28" x 16" S, C	\$640	\$675	\$690	\$720	\$1,315	\$1,340	\$1,840	\$2,160
30" x 12" S, C	\$475	\$505	\$520	\$530	\$635	\$715	\$795	\$890
36" x 12" C	\$545	\$570	\$595	\$605	\$700	\$845	\$1,000	\$1,110
48" x 12" C	\$645	\$660	\$645	\$790	\$885	\$955	\$1,170	\$1,410

Avenidas Funeral Chapel

Memorial Markers

Phone 623-925-1525 FAX 623- 882-3293



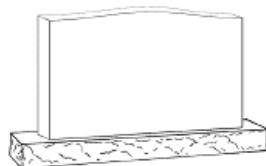
Slant Memorial Markers

Polished Front, Sawed Back, Serpentine Top, Rock Textured Nose and Sides**

Slant	Millstone Gray Morning Rose	St. Cloud Gray	Rushmore Mahogany	Flash Black	*Mountain Red	*Tropical Green	*Royal Black	*Blue Pearl
16" x 8" x 10" S	\$470	\$490	\$510	\$545	\$640	\$705	\$780	\$870
24" x 10" x 16" S	\$620	\$640	\$655	\$680	\$900	\$1005	\$1,205	\$1,410
30" x 10" x 16" C	\$790	\$810	\$820	\$855	\$1,110	\$1,220	\$1,445	\$1,645
36" x 10" x 16" C	\$835	\$910	\$980	\$1,030	\$1,320	\$1,435	\$1,680	\$1,880
48" x 10" x 16" C	\$1,025	\$1,155	\$1,180	\$1,355	\$1,705	\$1,840	\$2,100	\$2,325

** This style also available with polished back for an additional - \$75.

MARKER BASE IS OPTIONAL



Standard

Upright Memorial Markers

Polished Front and Back, Rock Textured Top and Sides, Serpentine Top**

Tablets	Millstone Gray Morning Rose	St. Cloud Gray	Rushmore Mahogany	Flash Black	*Mountain Red	*Tropical Green	*Royal Black	*Blue Pearl
24" x 6" x 18" S	\$730	\$830	\$845	\$880	\$980	\$1,055	\$1,170	\$1,280
30" x 6" x 18" S	\$1,065	\$1,120	\$1,160	\$1,375	\$1,475	\$1,875	\$2,100	\$2,320
36" x 6" x 20" C	\$1,330	\$1,475	\$1,480	\$1,705	\$1,760	\$2,130	\$2,330	\$2,580
42" x 6" x 20" C	\$1,585	\$1,620	\$1,725	\$2,015	\$2,035	\$2,415	\$2,555	\$2,825
48" x 6" x 24" C	\$1,870	\$1,980	\$2,005	\$2,780	\$2,795	\$3,130	\$3,710	\$3,950

** This style also available with polished Sides and Top for an additional - \$175.

MARKER BASE REQUIRED BUT NOT INCLUDED

Memorial Marker Bases

"BASES" for Slant and Upright Markers. Polished Top, Rock Textured Sides

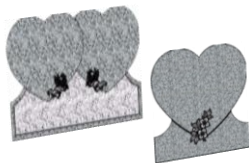
Tablets	Millstone Gray Morning Rose	St. Cloud Gray	Rushmore Mahogany	Flash Black	*Mountain Red	*Tropical Green	*Royal Black	*Blue Pearl
24" x 12" x 6"	\$305	\$315	\$325	\$330	\$380	\$395	\$475	\$540
*30" x 12" x 6"	\$325	\$370	\$380	\$400	\$465	\$475	\$600	\$680
*36" x 12" x 6"	\$370	\$415	\$425	\$445	\$520	\$530	\$670	\$760
42" x 12" x 6"	\$430	\$475	\$485	\$515	\$600	\$610	\$775	\$880
*48" x 12" x 6"	\$485	\$540	\$550	\$585	\$670	\$680	\$885	\$1,010
*60" x 12" x 6"	\$580	\$650	\$660	\$700	\$825	\$835	\$895	\$1,225
66" x 12" x 6"	\$635	\$710	\$720	\$770	\$910	\$920	\$1,190	\$1,350
72" x 12" x 6"	\$690	\$770	\$780	\$840	\$990	\$1,000	\$1,290	\$1,470

* indicates also available in 16" width for an additional - \$145

Avenidas Funeral Chapel

Memorial Markers

Phone 623-925-1525 FAX 623- 882-3293



Heart, Upright Memorial Markers

Polished Face, Sawed Back, Rock Textured Sides

Heart Tablets	Millstone Gray Morning Rose	St. Cloud Gray	Rushmore Mahogany	Flash Black	*Mountain Red	*Tropical Green	*Royal Black	*Blue Pearl
Single								
24" x 6" x 20"	\$840	\$900	\$915	\$950	\$1,110	\$1,125	\$1,340	\$1,540
30" x 6" x 24"	\$1,180	\$1,275	\$1,295	\$1,350	\$1,585	\$1,600	\$1,900	\$2,100
36" x 6" x 30"	\$1,720	\$1,860	\$1,880	\$1,975	\$2,320	\$2,350	\$2,790	\$2,890
Companion								
42" x 6" x 26"	\$1,865	\$2,000	\$2,025	\$2,125	\$2,470	\$2,505	\$2,945	\$3,050
48" x 6" x 28"	\$2,225	\$2,410	\$2,525	\$2,525	\$2,950	\$2,985	\$3,540	\$3,650

MARKER BASE REQUIRED BUT NOT INCLUDED



Memorial Marker Vases, Round

For Slant and upright Markers with base. Polished, Engraveable

Round	Millstone Gray Morning Rose	St. Cloud Gray	Rushmore Mahogany	Flash Black	*Mountain Red	*Tropical Green	*Royal Black	*Blue Pearl
4" x 4" x 10"	\$180	\$190	\$205	\$215	\$240	\$250	\$260	\$295
6" x 6" x 10"	\$220	\$230	\$245	\$255	\$270	\$290	\$300	\$315



Bronze Memorial Markers

Flat grass markers, Bronze with 1/4" aluminum core

	Classic or Dark Bronze Marker	W/Winter Birch Granite Base	W/Bronze Vase add
Infant 16" x 8"	\$450	\$550	N/A
Single			
24" x 12"	\$520	\$650	\$165
24" x 14"	\$550	\$700	\$165
Companion Side by Side			
44" x 13"	\$1,035	\$1,255	\$165
Companion Double Depth			
16" x 24"	\$590	\$765	\$165



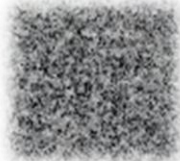
GRANITE MARKER BASE REQUIRED

Avenidas Funeral Chapel

Memorial Markers
Phone 623-925-1525 FAX 623- 882-3293

Granite Colors

Millstone Gray



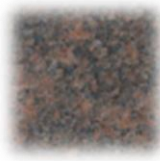
Morning Rose



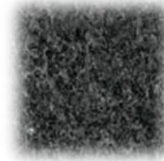
St. Cloud Gray



Mahogany



Flash Black



* Mountain Red



* Tropical Green



* Royal Black



* Blue Pearl



* Indicates Premium Colors

Portrait Cameos for markers

Flat Oval

	Color & Black and White	Price
OC-3	2 3/8" x 3 5/32"	\$180
OC-4	2 3/4" x 3 5/32"	\$195
OC-5	3 5/32" x 3 15/16"	\$210
OC-6	3 17/32" x 4 23/32"	\$230
OC-7	3 15/16" x 5 1/8"	\$250
OC-8	4 11/32" x 5 29/32"	\$275
OC-9	5 1/8" x 7 3/32"	\$295
OC-10	5 29/32" x 7 7/8"	\$320

No Charge for Cameo Installation



Memorial Design Information

The following is **INCLUDED** in memorial pricing:

- ❖ Any design available in the MRI design book (please ask)
- ❖ Names, Dates, **25 CHARECTERS** (letters) for epitaph(s) and emblems (space permitting, memorial size restrictions apply)
- ❖ Lithochrome of text/designs (special paint) Black or White.

The following is **ADDITIONAL** in memorial pricing:

- ❖ Design (clip art, scanned images) other than those available in the MRI design book - **\$110**
- ❖ Foreign letters (Chinese, Japanese, Russian etc.) and custom fonts - **\$10** each letter
- ❖ Match hand writing or signature - **\$110**
- ❖ Letters in excess of 25 letters - **\$2.25** each letter
- ❖ Engraving Verse, Names or Design on back of monument, up to 25 letters - **\$175**
- ❖ Granite vase engraving - **\$165**
- ❖ Center hole cut for bronze flower vase insert, (vase coring) - **\$120**
- ❖ Bronze vase for center cut 5" core - **\$80**

Delivery time periods, and setting fees:

- ❖ Deliveries within a majority of Arizona - \$50, please inquire for availability of delivery time.
- ❖ Express delivery available - **\$155**
- ❖ Flat and beveled markers, **STANDARD** size and colors – **30 to 45 days from date of SIGNED PROOF**
- ❖ Flat and beveled markers, **PREMIUM (*)** colors – **90 to 110 days from date of SIGNED PROOF**
- ❖ Setting Fees, Flat and slant markers up to 48 inches - **\$250** (Except Catholic and Dignity cemeteries)

Various cemetery requirements and regulations:

- ❖ "Catholic Cemeteries" have strict guidelines. A minimum requirement of 4" inches is required for all "Flat Lawn" markers. All Markers must have a "Catholic Cross" engraved on the same side as the deceased's name. Contact the Catholic cemetery for marker requirements. "Catholic Cemeteries" also require a 5" core hole with bronze vase for floral arrangements to remain at grave for more than 24 hours. Each marker is required to have approval by cemetery staff prior to placement. A setting fee of \$369 (subject to change) is charged by Catholic Cemeteries for all markers not purchased through their location and is not included in the above pricing. **Avenidas Funeral Chapel is not responsible for a marker that is ordered but not accepted by the Catholic Cemeteries due to failure of guidelines.**
- ❖ "Dignity Memorial" cemeteries have strict guidelines. A minimum requirement of 4" inches is required for all "Flat Lawn" markers. Contact the cemetery for marker requirements. **Avenidas Funeral Chapel is not responsible for a marker that is ordered but not accepted by the "Dignity Memorial" Cemetery due to failure of guidelines.**
- ❖ To ensure accuracy and acceptability of your marker, please check the requirements of the cemetery.
- ❖ **Avenidas Funeral Chapel does not control cemeteries charges for setting fees at cemeteries that provide their own marker setting.**